

Location: Worldwide in temperate/subtropical oceans and the Mediterranean Sea
 Diet: Mollusks and crustaceans
 Threats: Harvest for meat/eggs, habitat loss, bycatch, disease, pollution, boat strikes, and climate change



Loggerhead Sea Turtle
Caretta caretta

Location: Worldwide in tropical and subtropical oceans
 Diet: Sea sponges, corals, crustaceans, tunicates, and algae
 Threats: Harvest for meat/eggs, habitat loss, bycatch, disease, pollution, boat strikes, and climate change



Hawksbill Sea Turtle
Eretmochelys imbricata

Location: Worldwide in tropical oceans
 Diet: Algae, crustaceans, and invertebrates
 Threats: Harvest for meat/eggs, habitat loss, bycatch, disease, pollution, boat strikes, and climate change

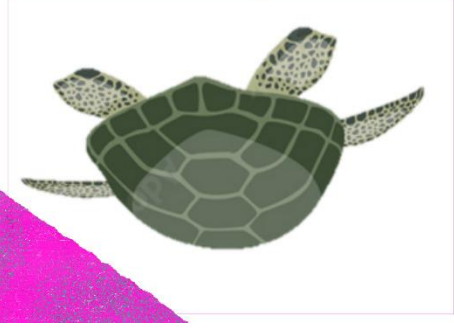
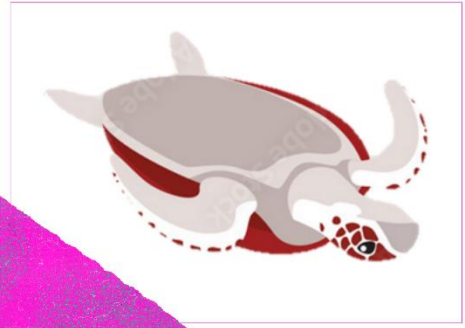


Olive Ridley Sea Turtle
Lepidochelys olivacea

Location: Worldwide in temperate/subtropical oceans and the Mediterranean Sea
 Diet: Seagrass, algae, and invertebrates
 Threats: Harvest for meat/eggs, habitat loss, bycatch, disease, pollution, boat strikes, and climate change



Green Sea Turtle
Chelonia mydas



Leatherback Sea Turtle
Dermaidelys coriacea



Location: Worldwide in temperate/subtropical oceans and into sub-polar latitudes
 Diet: Jellyfish and salps
 Threats: Harvest for meat/eggs, habitat loss, bycatch, disease, pollution, boat strikes, and climate change

Kemp's Ridley Sea Turtle
Lepidochelys kempii




Location: Gulf of Mexico and the east coast of Florida to New England
 Diet: Crabs and discarded bycatch
 Threats: Harvest for meat/eggs, habitat loss, bycatch, disease, pollution, boat strikes, and climate change


Flatback Sea Turtle
Natator depressus



Location: North Australia
 Diet: Sea cucumbers, jellyfish, mollusks, and corals
 Threats: Harvest for meat/eggs, habitat loss, bycatch, disease, pollution, boat strikes, and climate change



SEA TURTLES OF THE WORLD
 Zine made by: Emma Humphreys



with the Phillips Lab at the University of Southern Mississippi
 Contact: emmahumphreys@usm.edu

Images from:
 Adobe Stock, Canva, & IUCN Red List
 Sources used:
 • www.fisheries.noaa.gov
 • www.iucnredlist.org
 • www.cms.int

