

# Sea Turtles of the World Dichotomous Key

**Instructions:** On the following pages, there are 7 unidentified sea turtle species. It is your job to identify them! First, pick one sea turtle to identify. Next, starting with 1a on the table below, see if your sea turtle matches the description. If not, continue onto 1b. Follow the numbers listed in the identification section until an animal (in bold) meets the descriptions. Repeat with the remaining turtles!

Description	Identification
1. a.) Has scutes.....	go to 2
b.) Does not have scutes.....	<b>leatherback</b>
2. a.) Long, sharp, and pointy beak.....	<b>hawksbill</b>
b.) No pointy beak.....	go to 3
3. a.) 4 pairs of scutes.....	go to 4
b.) 5 pairs of scutes.....	go to 5
c.) 7 pairs of scutes.....	<b>olive ridley</b>
4. a.) 3 postorbital scales.....	<b>flatback</b>
b.) 4 postorbital scales.....	<b>green</b>
5. a.) Circular carapace.....	<b>Kemp's ridley</b>
b.) Long, oval carapace.....	<b>loggerhead</b>

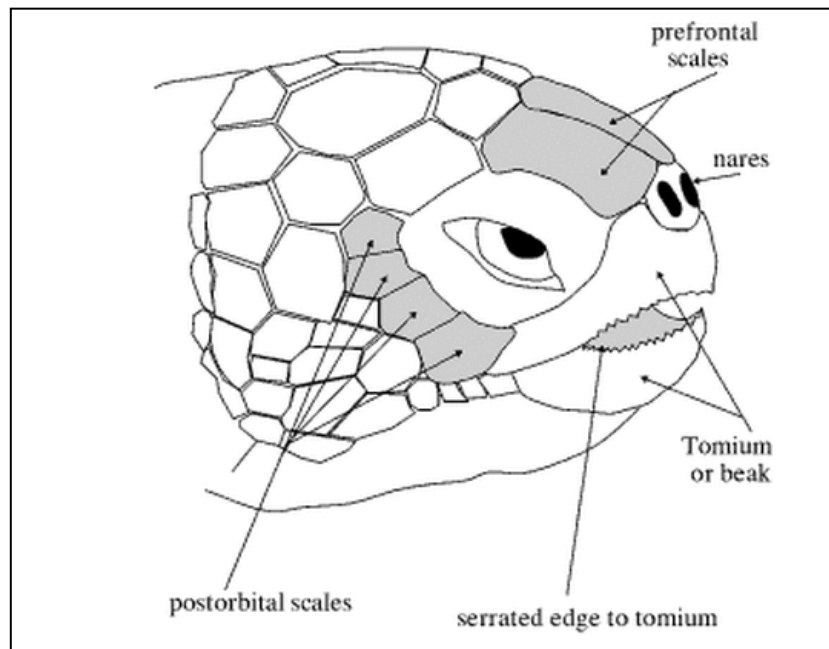
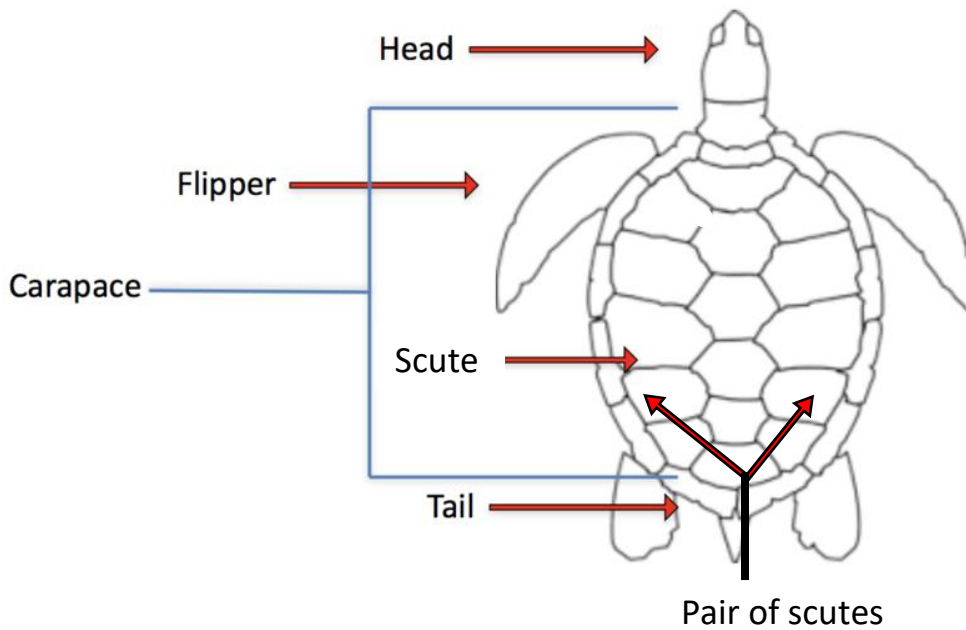
## **Citations and Answer Key:**

-Eckert, K. L., Bjorndal, K. A., Abreu-Grobois, F. A., & Donnelly, M. (1999). Taxonomy, external morphology, and species identification. *Research and management techniques for the conservation of sea turtles*, 21, 11-13.

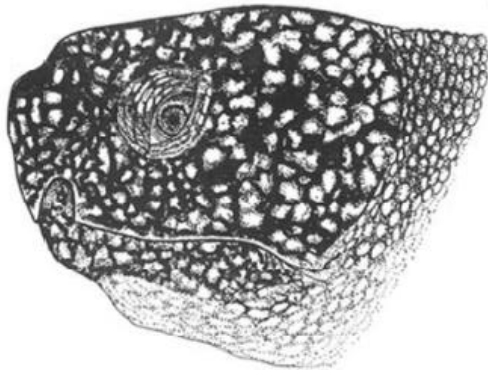
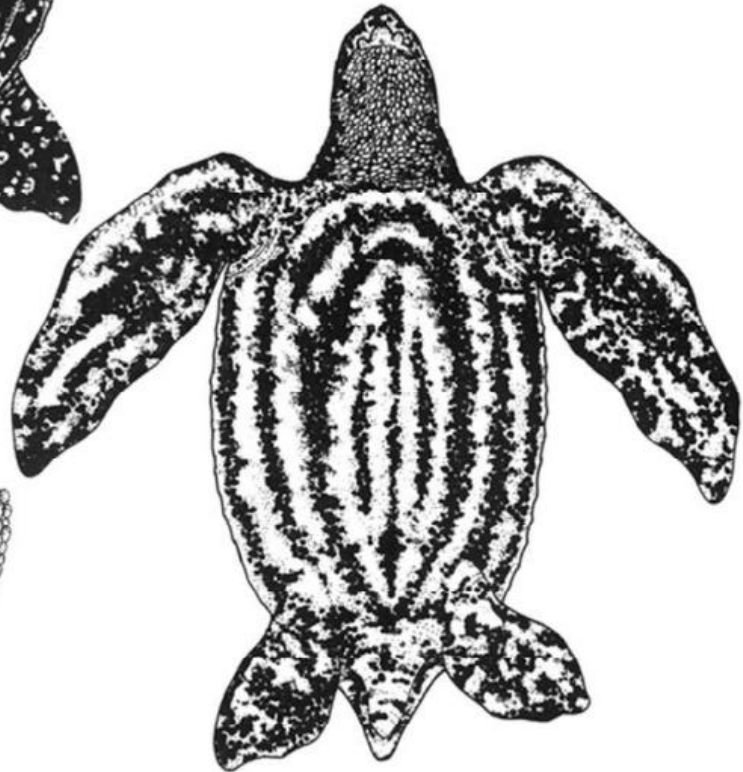
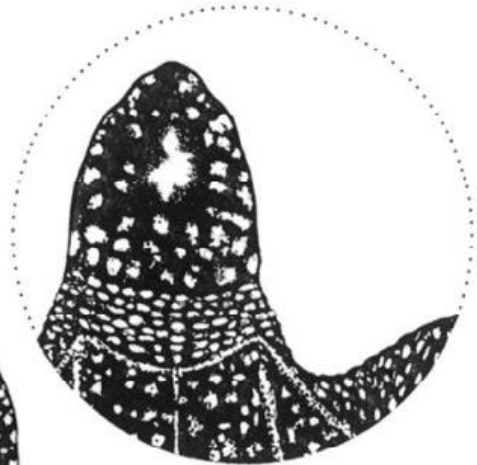
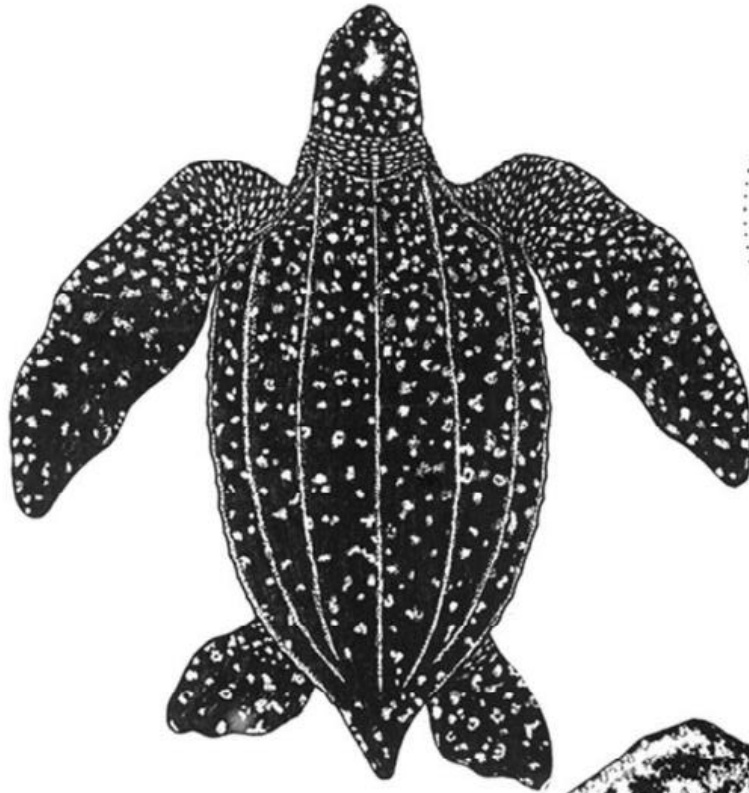
-Activity created by Emma Humphreys with the University of Southern Mississippi's STEM on Demand (2023); contact: [emma.humphreys@usm.edu](mailto:emma.humphreys@usm.edu)

# Sea Turtle Anatomy and Terminology

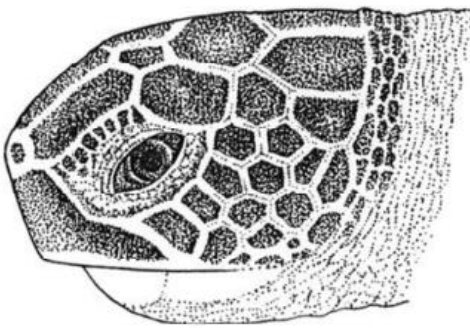
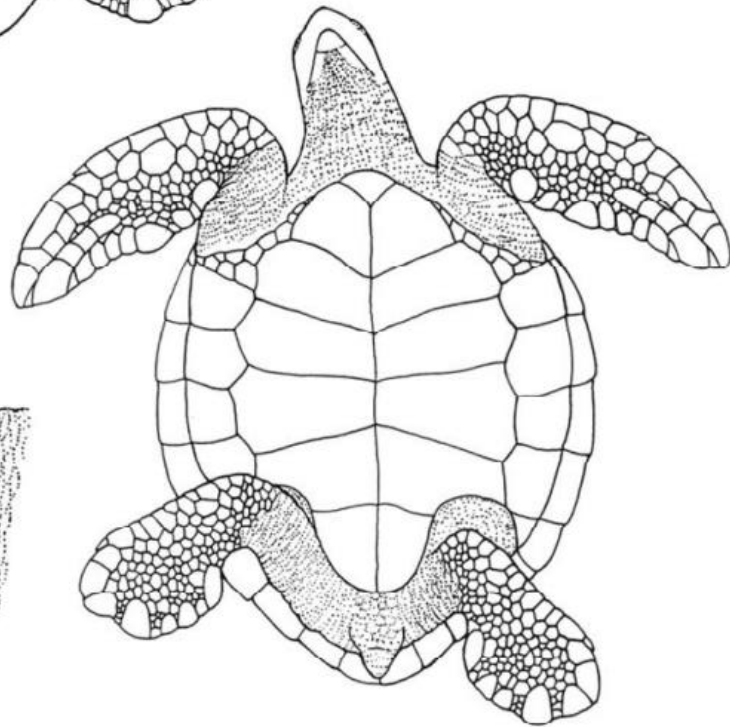
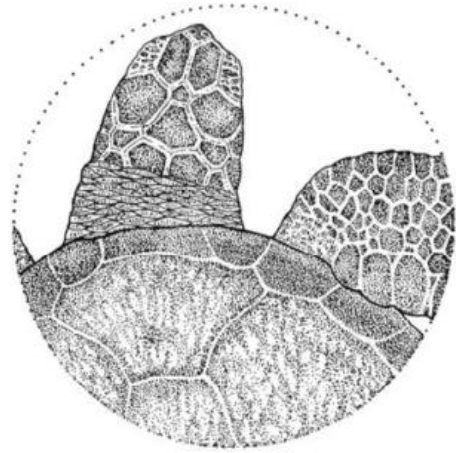
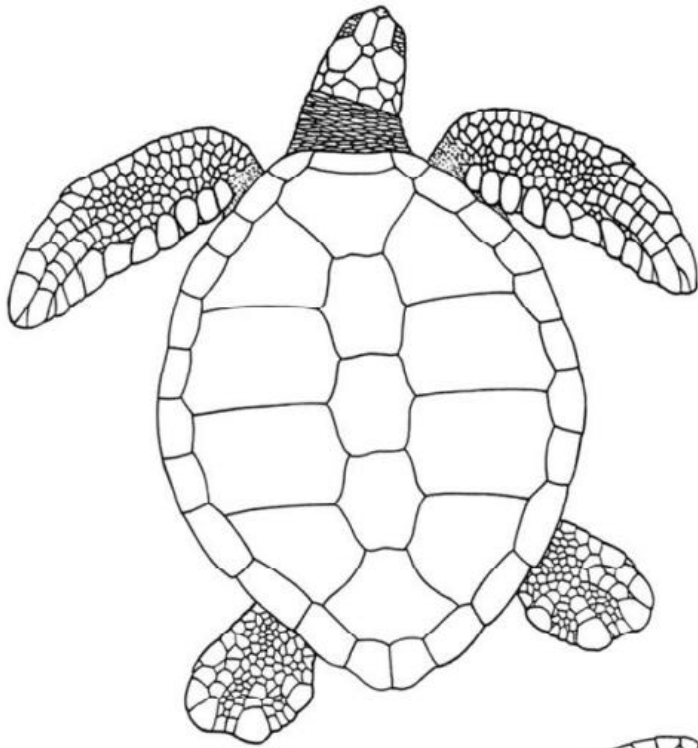
## Parts of a Turtle



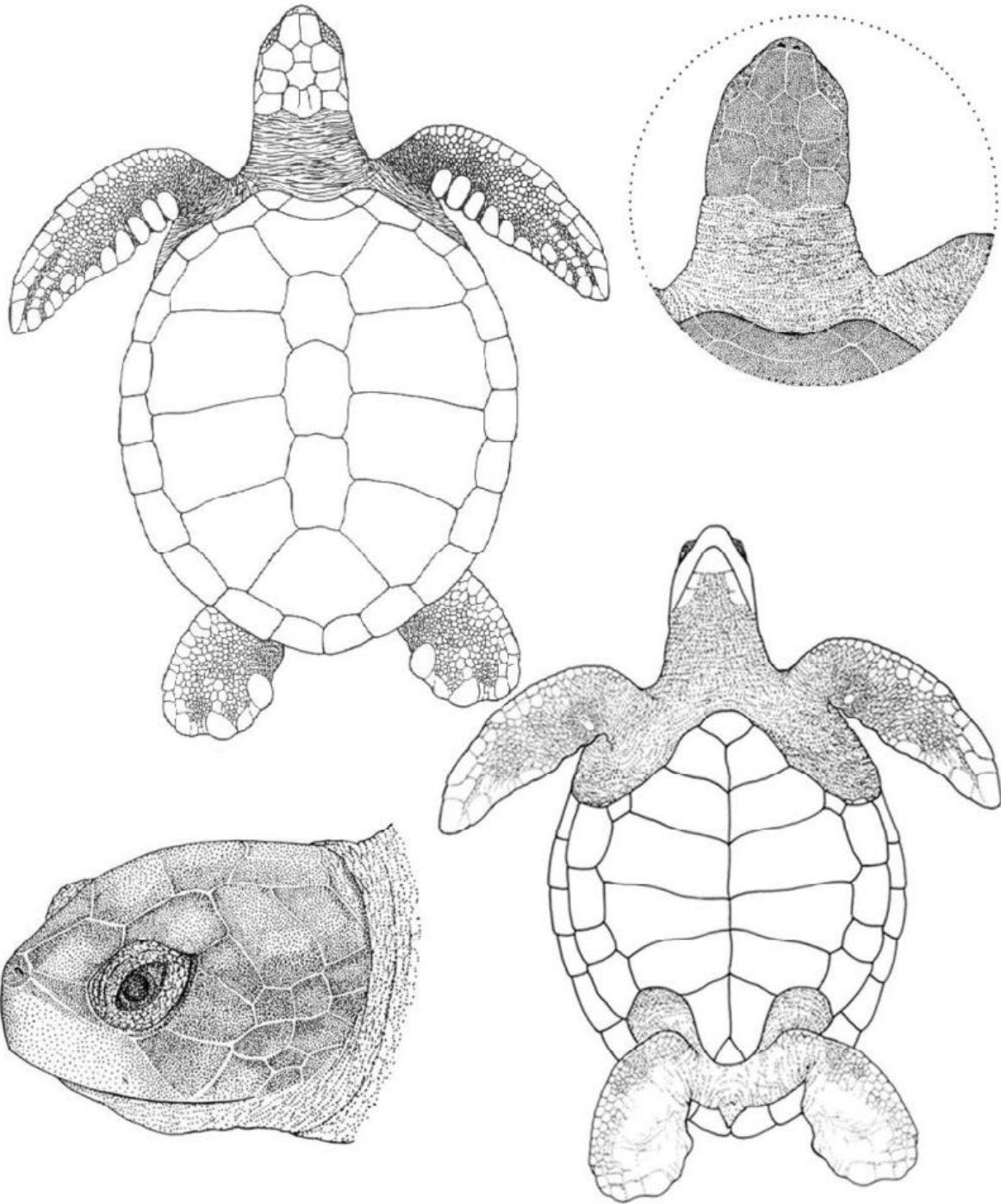
Turtle: \_\_\_\_\_



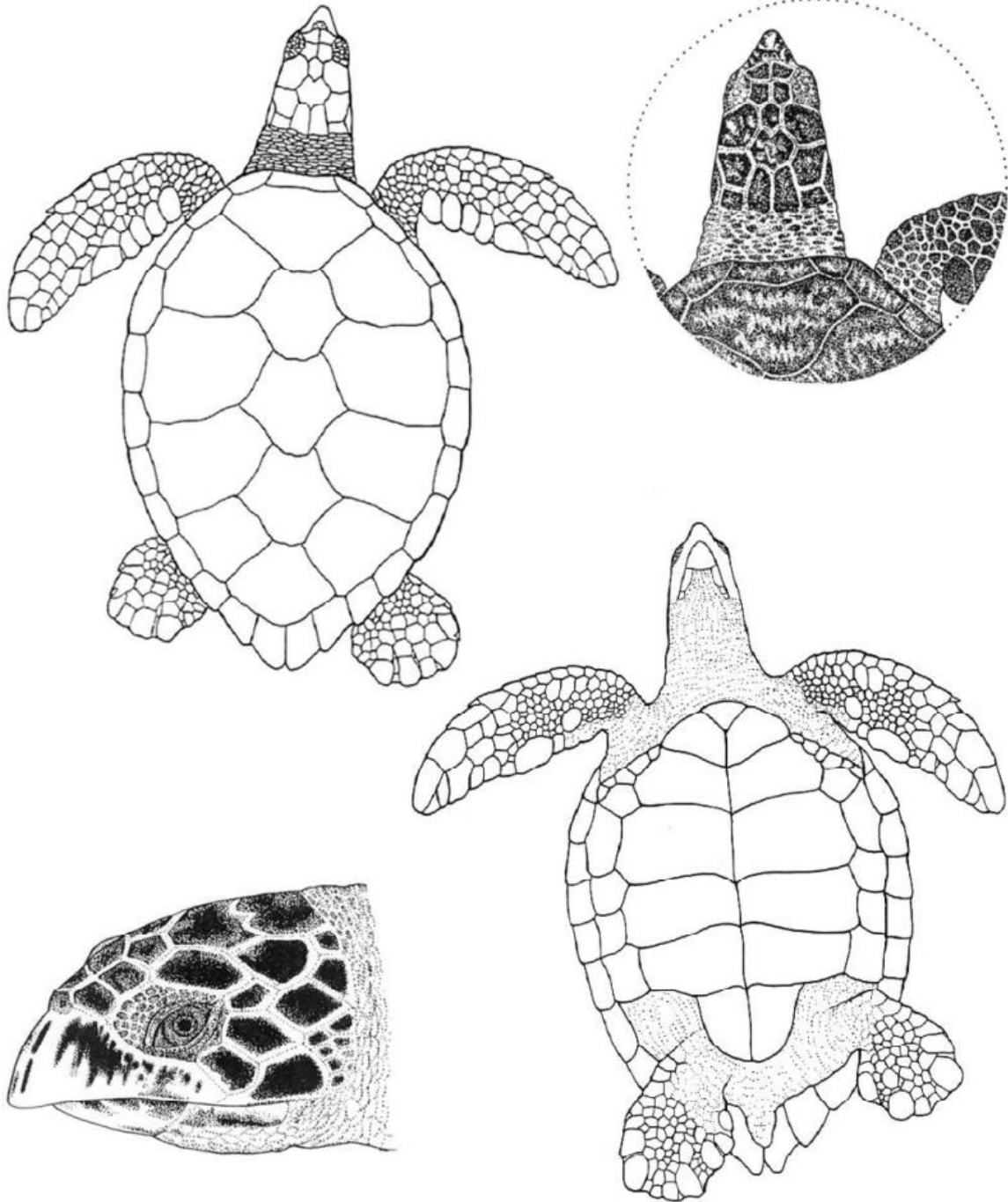
Turtle: \_\_\_\_\_



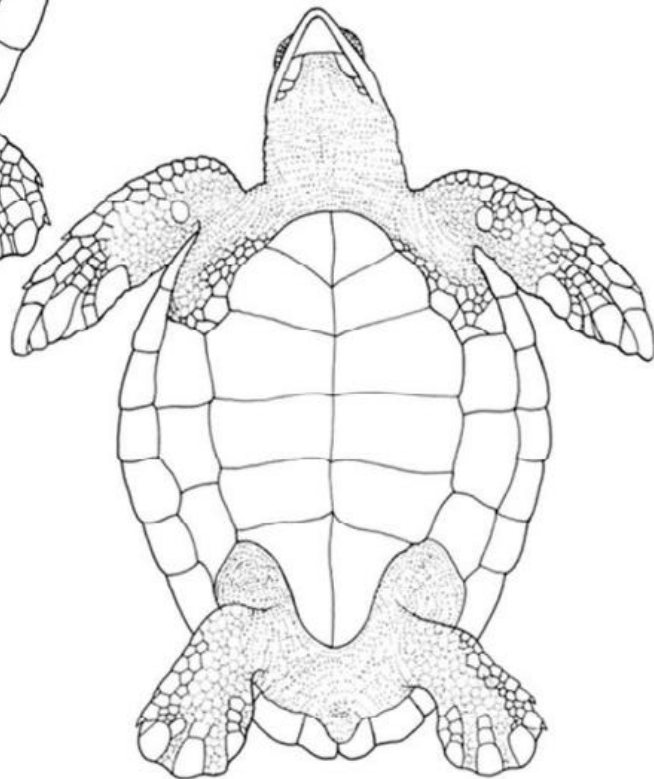
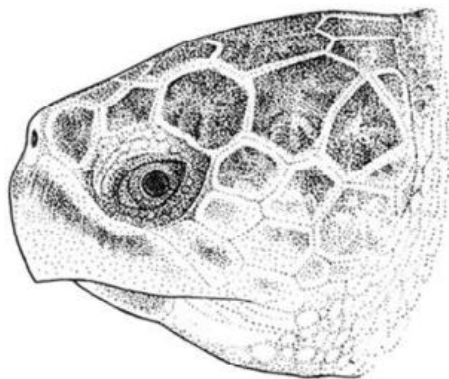
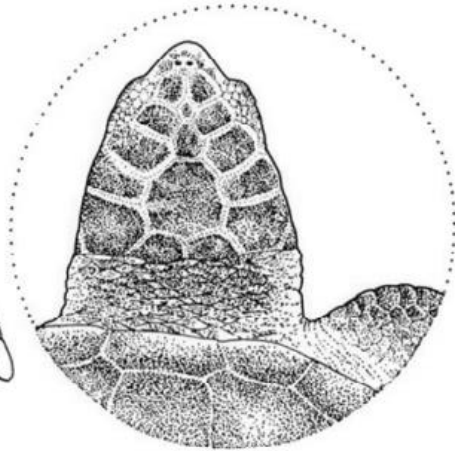
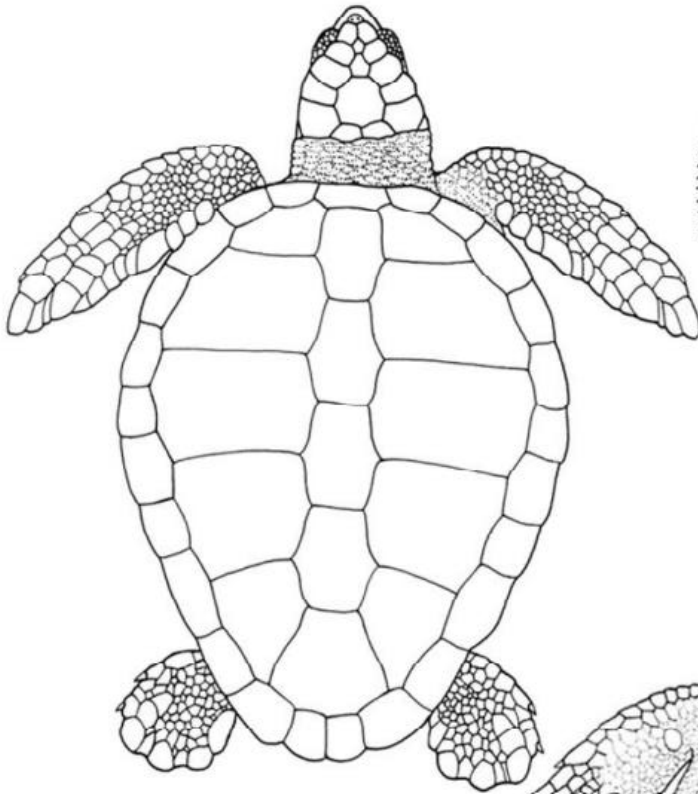
Turtle: \_\_\_\_\_



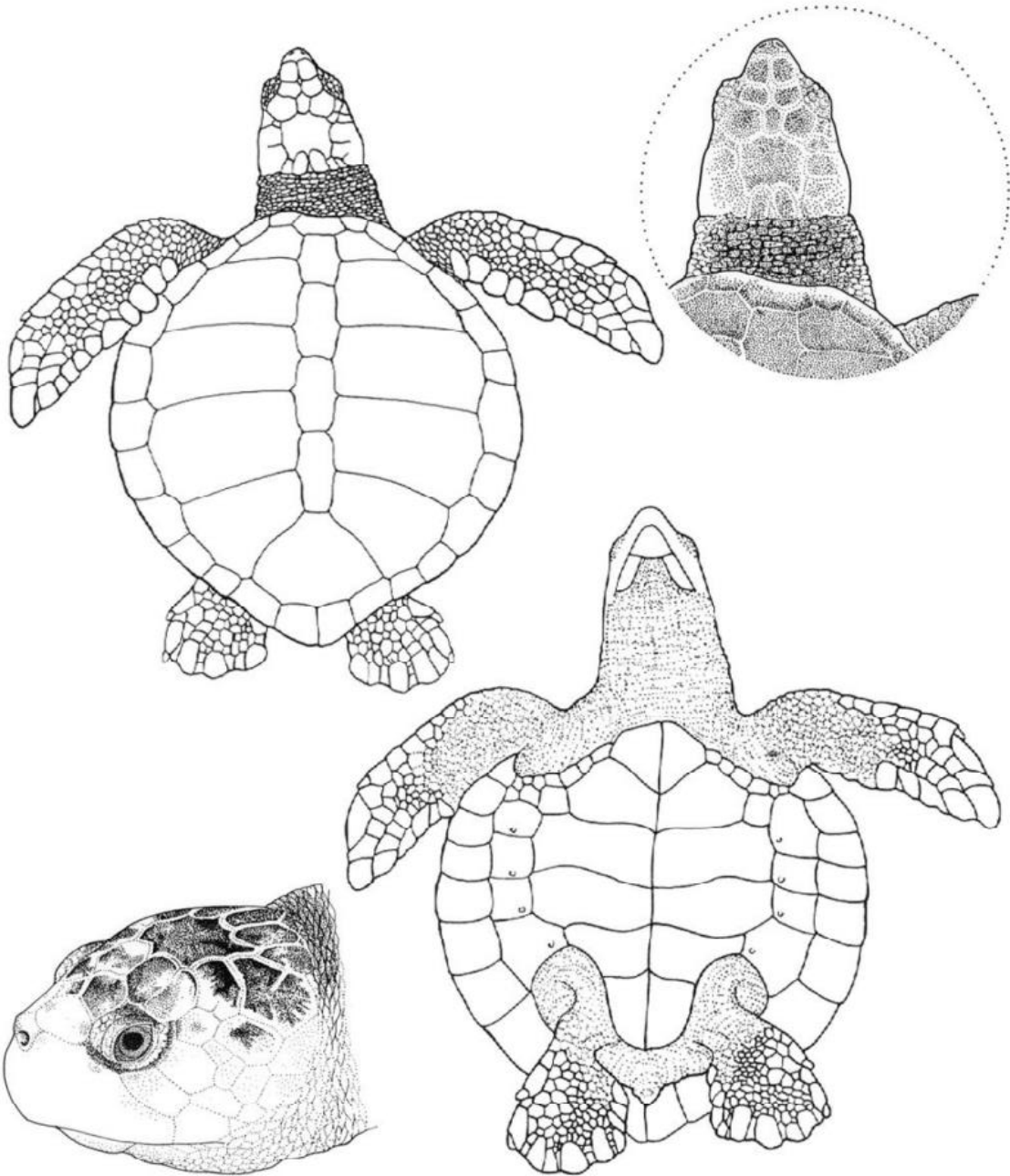
Turtle: \_\_\_\_\_



Turtle: \_\_\_\_\_



Turtle: \_\_\_\_\_





Turtle: \_\_\_\_\_

